

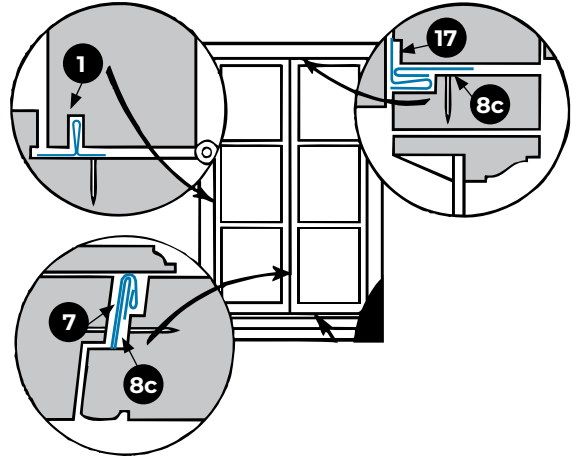
Casement Windows

Series #80 In-swinging Wood Casement

Interlocking type weather strips for inswinging wood casements.

Features: Special attention is given to inswinging casement windows to prevent water leakage. Trough type equipment at sill is essential to effect proper drainage.

How to Specify: All inswinging wood casements shall be equipped with Metal Weather Strips, Series No. 80 equipment, zinc or bronze with No.....sill, in accordance with manufacturer's standards.

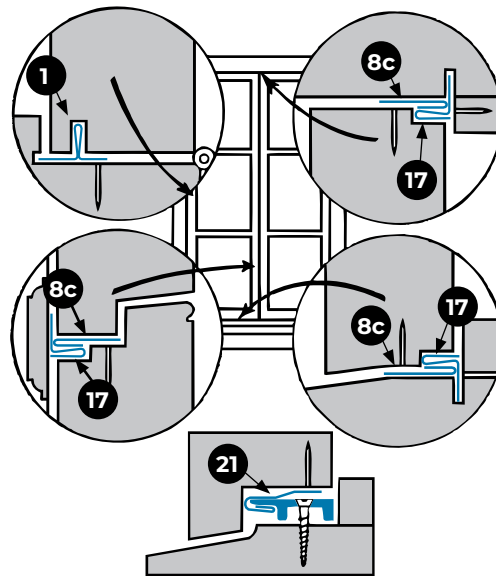


Series #90 Out-swinging Wood Casement

A simple yet efficient design for the most severe conditions.

Features: Sturdy interlocking type weather strip. If desired, brass saddle may be used at sill. No. 823, as shown at right, is recommended for this purpose.

How to Specify: All out-swinging wood casements shall be equipped with Metal Weather Strips, Series No. 90 equipment, zinc or bronze, and with No.....sill member, in accordance with manufacturer's standards.



Double Hung Windows

Series #60 Kalamein Sash

Used on a metal covered wood sash or hollow metal sash where special grooving for concealed weather stripping has not been provided by the manufacturer of the sash. We suggest that Architects request our shop drawings of required grooving for concealed type, before fabrication of sash.

How to Specify: All metal covered or hollow metal double hung windows shall be equipped with Metal Weather Strips, Series No. 60 equipment, all zinc (or cold rolled bronze) in accordance with manufacturer's standards.

