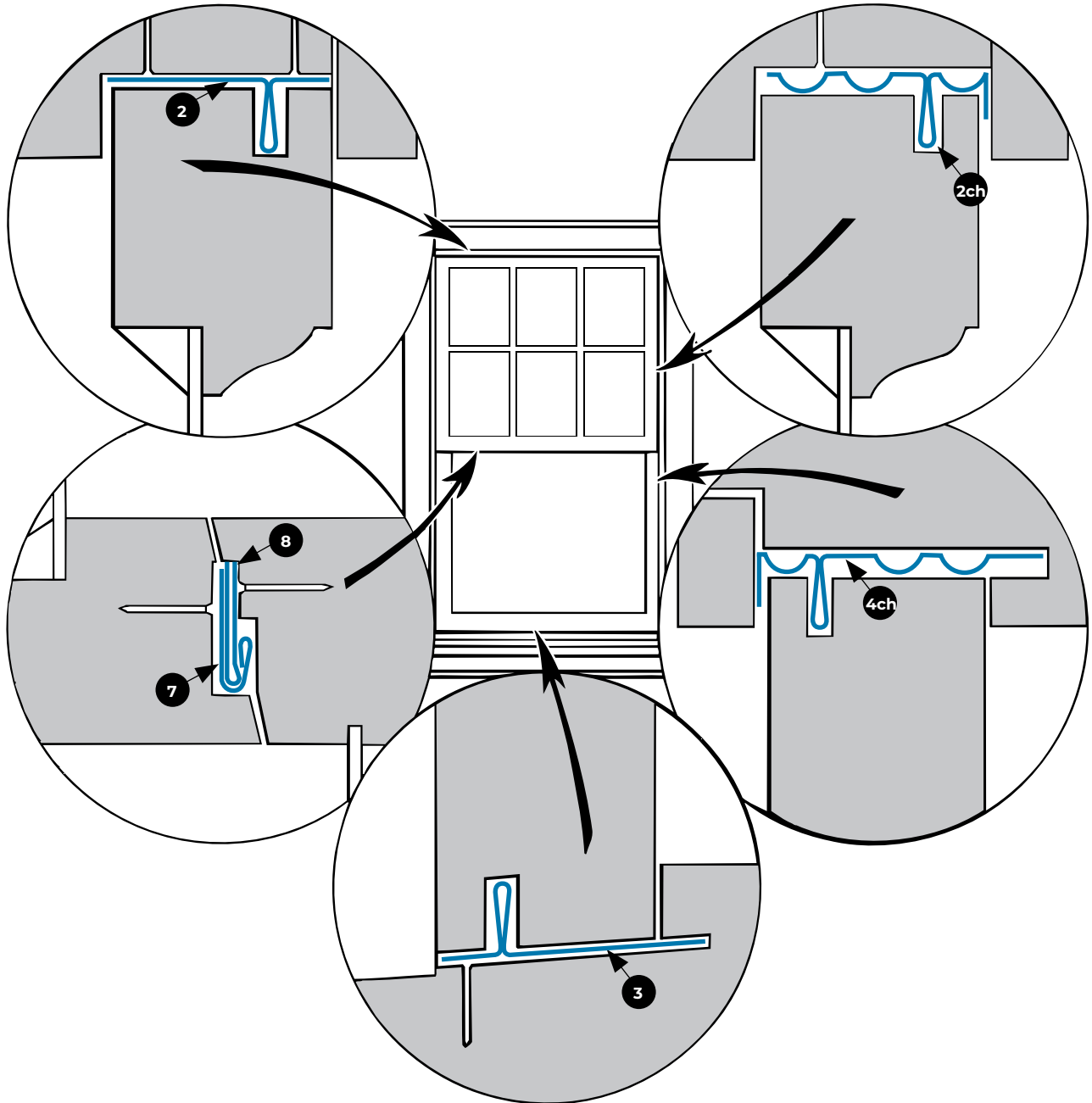


Series #10-up 1 3/8" or 1 3/4" Double Hung Sash

Accurate series 10UP equipment in zinc or bronze is standard for residential or light commercial construction. Grooving the sash next to the parting stops, and mitering the tongues at the corners, provides a continuous seal all around the window.



Location	1- 3/8"	1-3/4"	Thickness	Attachment
Head	#2	#3	.018	Nails
Sill	#3	#6	.018	Nails
Meeting Rail	#7	#7	.020	Nails
	#8	#8	.018	
Upper Sides	#2CH	#3CH	.018	Nails
Lower Sides	#4CH	#5CH	.018	Nails

